



Pipe Clamp Addendum

This addendum for the SOP – Y "D" with a 4" post and 2 pipe clamp halves per channel.

This pipe clamp arrangement replaces the round U-Bolts shown attaching the cross channels to the post in the standard SOP instructions.

Enclosed fasteners and hardware for this clamping system:

- 8 - 1/2" bolts
- 16 - 1/2" washers
- 8 - 1/2" lock nuts
- 4 - 4" pipe hangers

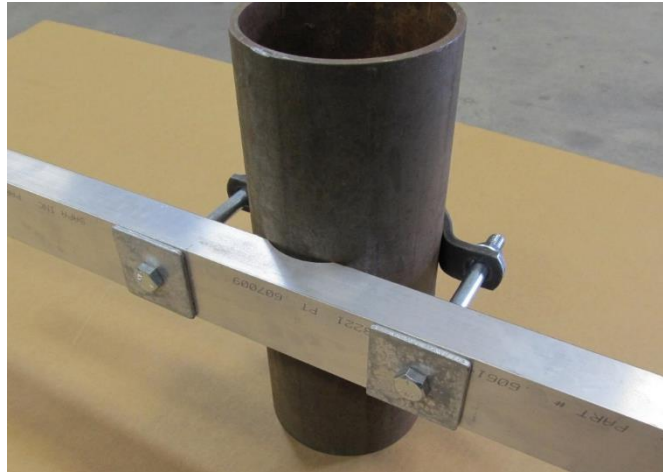
General arrangement of pipe clamp to channel assembly for both top and bottom cross channels shown below. See reverse side for single clamp arrangement.



Rev. 12/17

This addendum is for any SOP with a post that is 5" or larger with only one large pipe clamp per channel.

The pictures below show the single pipe clamp arrangement. For this installation, you will also use 1/2" flat washers between the head of the bolt and square washer (not shown in photo). The flat washers and square washers are included in the hardware package. This pipe clamp arrangement replaces the round U-Bolts shown attaching the channel to the post in the standard SOP instructions. This arrangement is typically used for posts which are 5" diameter and larger.



Enclosed fasteners and hardware for this arrangement.

- 4 – 1/2" bolts
- 4 – 1/2" washers
- 4 – 2" square washers
- 4 – 1/2" lock nuts
- 2 – pipe clamp halves